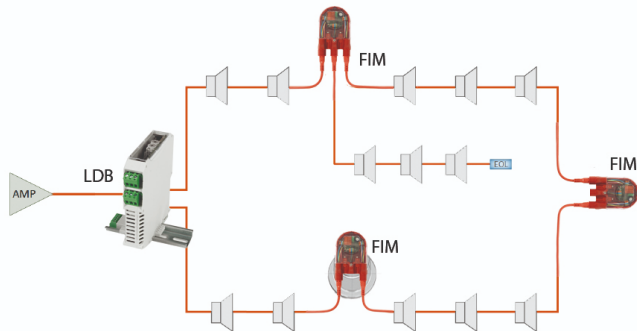




General information

4EVAC USB to RS485 Adapter is the USB to serial interface linking 4EVAC Loopdrive system with Loopdrive Sniffer PC application. Thanks to this adapter, up to 256 loudspeaker loops under surveillance of Loopdrive system can be simultaneously monitored in real time on a PC screen, giving information about past and present faults: open/short/earth leakage, voltage and current levels, amplifier fault, and more – individually for each loop.



Example of loudspeaker loop under surveillance of 4EVAC Loopdrive system coupled with a PA/VA amplifier

USB to RS485 adapter allows to control and reset settings of each loudspeaker loop: enable/disable and delay detection of open line, earth leakage, amp fault, etc. Special service commands of Loopdrive system can be triggered via USB to RS485 adapter to multiple loudspeaker loops simultaneously, including fault reset, service mode (special mode for safe and silent installation of FIM loop isolators) and FIM tracking, where field cable failures can be located and identified remotely by software.



4EVAC USB to RS485 interface with USB cable

What's in the box?

- USB to RS485 interface;
- USB A-B cable 1,5m.

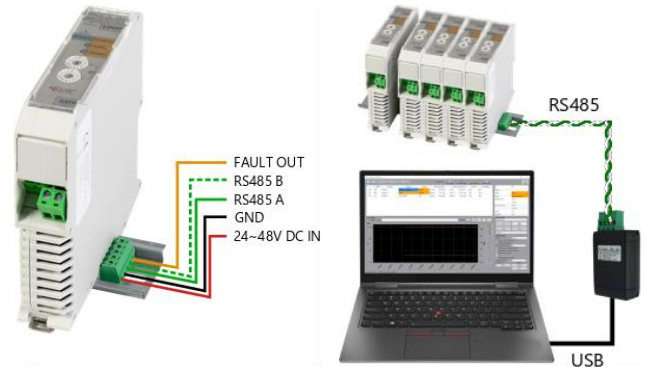
Connectors

- USB type B;
- 4-way 5.08 Phoenix pluggable screw terminal.

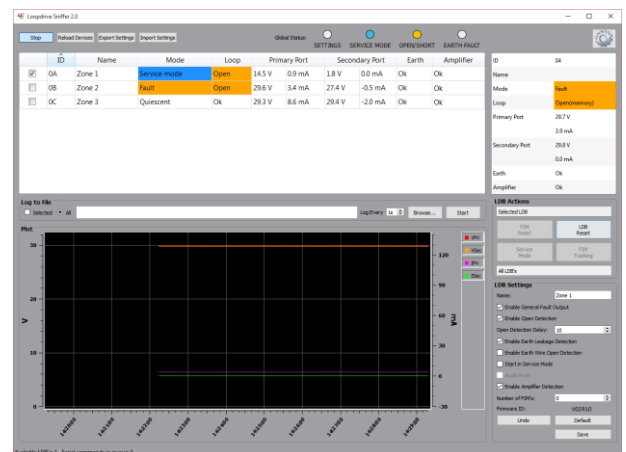
Indications

- Power LED
- Data LED

USB to RS485 adapter connects by means of 2 wires to the serial bus of Loopdrive LDB (LoopDrive Booster), with maximum distance of 1200 m. Multiple LDBs (max. 256 loops) can be connected to the same bus in parallel for simultaneous monitoring and loop management.



Loopdrive Sniffer: connection diagram




Loopdrive Sniffer application – loop monitoring

Technical specifications

4EVAC USB to RS485 adapter	
OS compatibility	Microsoft Windows 7, 8, 8.1, 10
Hardware requirements	USB 2.0 port
Connectors	
RS485	4-way 5.08mm pluggable terminal block
USB	USB-B (PC link, power)
Max. distance RS485	1200m (depending on cable)
Indications	Power LED, Data LED
Housing	ABS
Dimensions (H x W x D)	80 x 40 x 22 mm
Packaging (H x W x D)	125 x 115 x 85 mm
USB cable length	1.5 m
Weight (incl. USB cable)	140 g

All information provided in this document is subject to change without notice. 4EVAC may also make improvements and/or changes in the products described in this information at any time without notice.

Hacousto Holland bv Industrieweg 87 2651BC Berkel & Rodenrijs				
4EVAC USB to RS485 Adapter	Author	DD	Revision	V01
			Date	07-10-2020



4EVAC is a trade name of:

Hacousto Holland bv
 Industrieweg 87
 2651BC Berkel & Rodenrijs
 The Netherlands

www.4EVAC.com